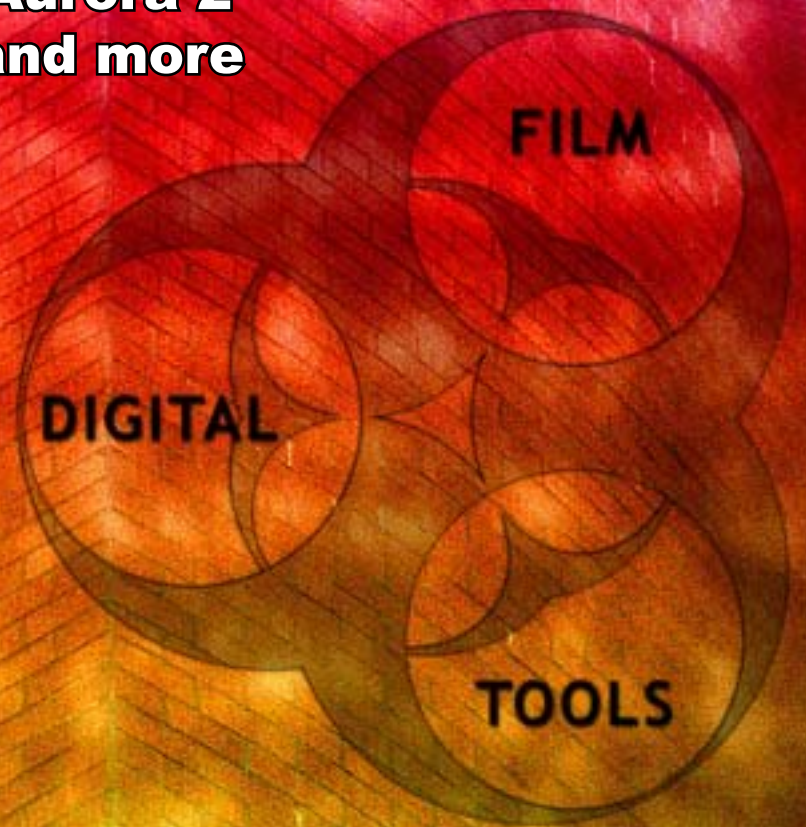




# plugs·n·pixels

IMAGE CREATION, MANIPULATION & EDUCATION

**Xenofex**  
**Andromeda**  
**Color Efex Pro**  
**Texture Anarchy**  
**Aurora 2**  
**and more**



55mm in action



Digital Film Tools

## 55mm v6

A full suite of superb  
Hollywood-quality filters

DFT 55mm



## table of contents

### Page 3: Behind The Cover Art

The enigmatic cover scene was created using Digital Film Tools' 55mm collection. This tutorial takes you through the creative process, complete with screenshots

### Page 4-5: Featured Plug-In

Digital Film Tools 55mm 6.0 simulates popular glass camera filters, specialized lenses, optical lab processes, film grain and offers exacting color correction as well as natural light and photographic effects

### Plug-In Information

Pages 6-9: Alien Skin Xenofex 2 tutorial

Page 10-12: Andromeda plug-ins

Page 13: PixelGenius PhotoKit

Page 14: Digital Element Aurora

Page 15: nik Color Efex Pro 2

Page 16: Digital Anarchy Texture Anarchy

Page 17: Knoll Light Factory

Page 18: FreeGamma Lobster

Page 19: PhotoTune SkinTune

Page 20: Closing artwork

## plugs·n·pixels

### ISSUE #2

Created and produced for  
free distribution to the  
Photoshop plug-in  
community by Mike Bedford

WEBSITE: [www.plugsandpixels.com](http://www.plugsandpixels.com)

EMAIL: [mike@plugsandpixels.com](mailto:mike@plugsandpixels.com)

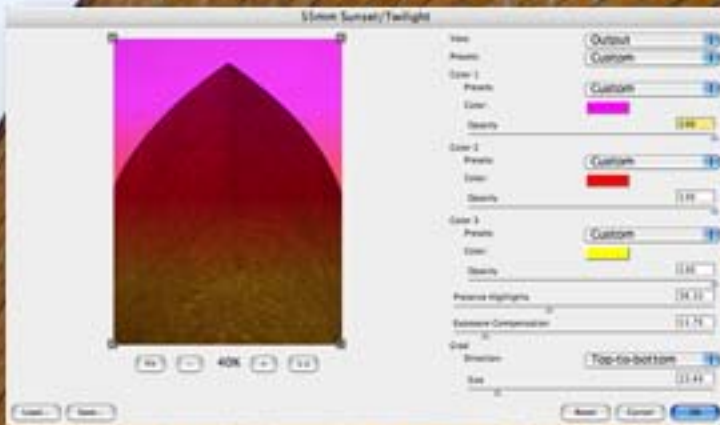
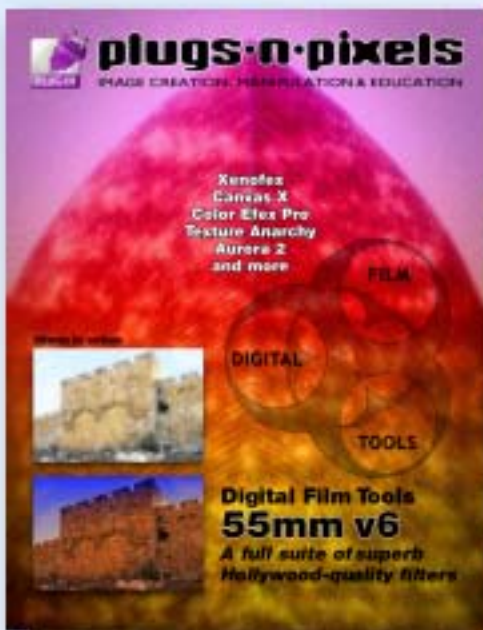
Layout created in ACD Canvas X  
Final PDF by Acrobat 9 Pro  
Text and images by Mike Bedford

.....  
Plugs 'N Pixels will always be free!

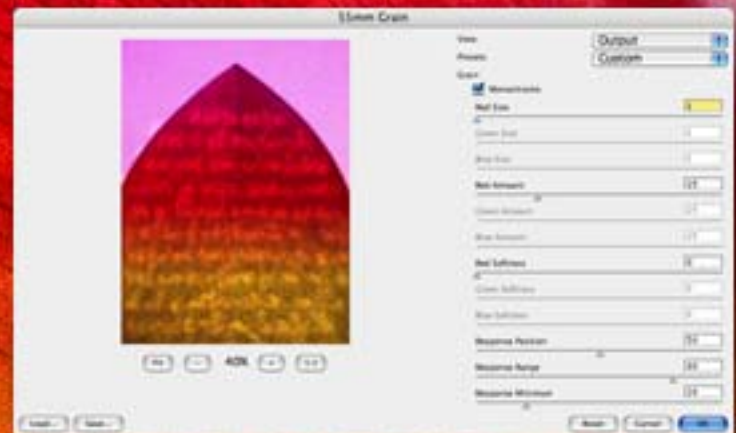
Be sure to check the website for  
discounted plug-ins and apps.

"Love your site and the Plugs 'N Pixels  
ezine, keep up the great work!" -Rob





Unlike the image on the cover of issue #1, this issue's effect is actually quite easy. I opened the image of the odd brick structure and first applied Digital Film Tools' 55mm Sunset/Twilight filter to it, adjusting the colors and gradient as shown above.

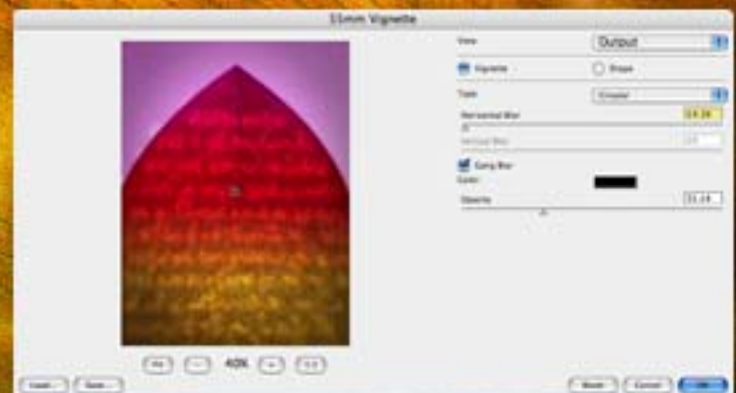


The next step was to add Grain with a Monochrome setting to roughen up the image, followed by a circular Vignette.

A simple 4-step application of 55mm filters and you have a striking image from a dull one!



Under 55mm's Light! option, I chose the Shape button, Gam Pattern 853 (Handwriting). I adjusted its placement until it fit the image.



**behind the cover art**

Let there be light! With Digital Film

Tools 55mm Light! option, it doesn't matter whether you had light in the photo in the first place or not. Originally developed for use in Digital Film Works' Los Angeles studio, Light! is now available to the public separately and inside the 55mm suite. Light! works its magic via shape and texture masks that simulate real-world objects (windows, doors, etc.). Use the masks that ship with 55mm, or make your own, customized to your particular needs.

As you can see in the examples here, the masks leave projections of light in the photo that correspond to their shapes. You can skew the masks to fit your subject, as I did here. Another use for Light! is to simply light up your image in a simulation of mist and fog camera filters, or adding glow effects to a scene (see the wall and trash can example). The Light! interface allows for detailed adjustment of your chosen effects. You can see the mask effect as it will appear on the image, or view the mask by itself. For advanced control, you can use matte extraction techniques to isolate parts of the image before adding the effects.



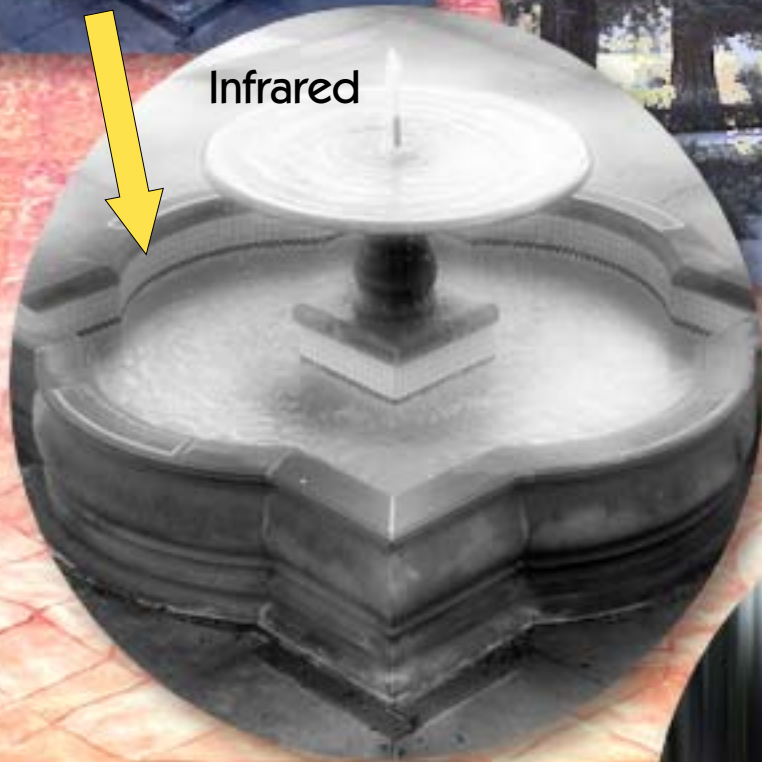
# Digital Film Tools LIGHT!



# Other 55mm options:



Infrared

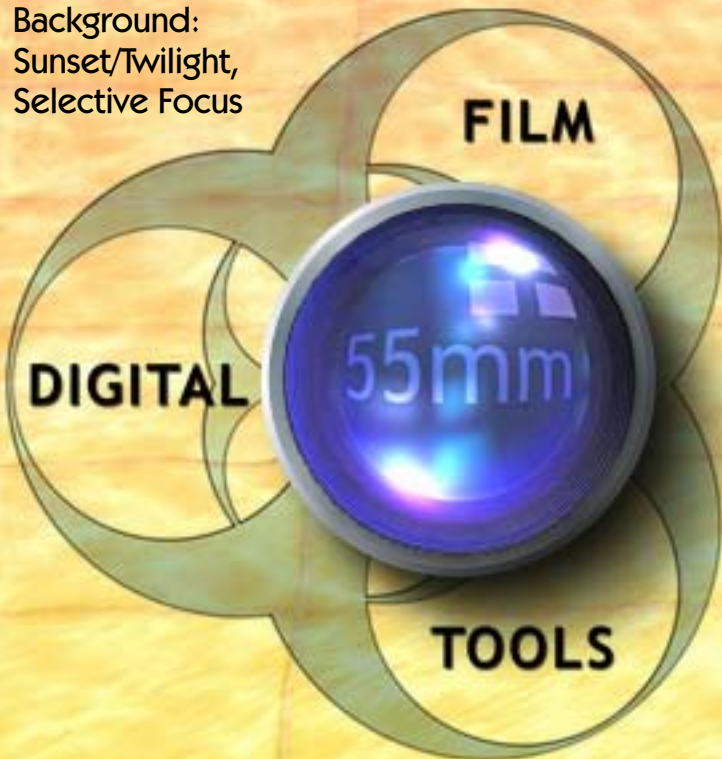


Ultra Contrast



Fast Blur

Background:  
Sunset/Twilight,  
Selective Focus



**55mm** [www.plugsandpixels.com/55mm.html](http://www.plugsandpixels.com/55mm.html)

Digital Film Tools 55mm is the definitive set of 68 digital optical filters meant to simulate popular glass camera filters, specialized lenses, optical lab processes, film grain, matte generation, exacting color correction as well as natural light and photographic effects—all in a controlled digital environment with either 8 or 16 bits per channel processing.

Alien Skin  
products enable  
you to create  
your own worlds  
from scratch, or  
to transform  
existing images

XEN@FEX



# XENOFEX

I've used Alien Skin filters for years, ever since The Black Box made its appearance in the mid-'90s. The venerable Xenofex, now in version 2, is an eclectic collection of digital imaging effects ranging from Burnt Edges to Cracks to Lightning to Rip Open to Television (with even more in between). This short tutorial shows you how to apply several of these filters to one image. As with each of Alien Skin's products, the results are fun and addictive!



Original image—very boring background! Let's fix that.



Select the background, apply the Little Fluffy Clouds filter.



Apply the Crumple filter to the selected area (sky only).



Invert the selection, apply the Electrify filter. Zap!



Apply the Television filter and adjust the curvature.



Finally, throw a bolt of Lightning across the sky.

More Xenofex  
madness...





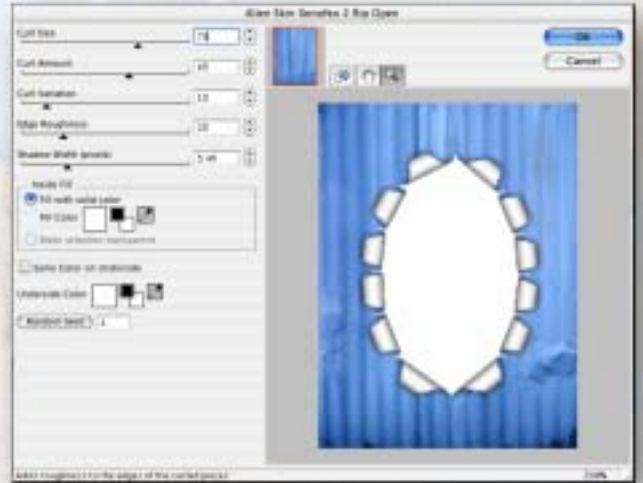
Here's another Xenofex arrangement I came up with while pursuing the make-it-up-as-I-go-along method (which is how I usually create my designs). This short tutorial makes use of four of the fourteen Xenofex filters. Feel free to make additional creative modifications to these instructions as you are inspired! There's no telling what you'll come up with.



Open what will be the eventual inset image, select all and copy.



Open the outer image, create an oval selection in the center.



Use Xenofex's Rip Open filter to create a torn appearance from within the selection.



Use the Magic Wand to select the white interior of the ripped open area.



Use Edit>Paste Into to paste the copied inset image into the oval.



Use Xenofex's Electrify filter to create energy radiating from within the same selection.



Use the Burnt Edges filter on the entire image (no selections) to create the edge effect.



Finally, use Xenofex's Lightning filter to add the obligatory lightning bolt to the upper corner.



## These effects are from another world...

Andromeda offers 14 quality-engineered Photoshop-compatible plug-ins that have been categorized into four "Collections": Photographic Tools & Lens Effects, Artistic Screening Tools, Graphic Design Resources and Specialty Filters.

Let's take a look at 5 of these filters: Scatterlight Lenses, VariFocus, Perspective, Shadow and RedEye.



# ScatterLight Lenses

by Andromeda

SoftFocus \* DreamOptics \* StarLight

When you need a bit of warm-fuzzy in your photos, Andromeda **Scatterlight** will do just that—use the highlight areas of the image to create a soft and dreamy effect. Choose from several effect sets such as DreamOptics for highlight glow, SoftFocus for softening features in portraiture, SoftDiffuser for simulating mist and fog and StarLight Lenses to produce glints, sparks and flare effects.



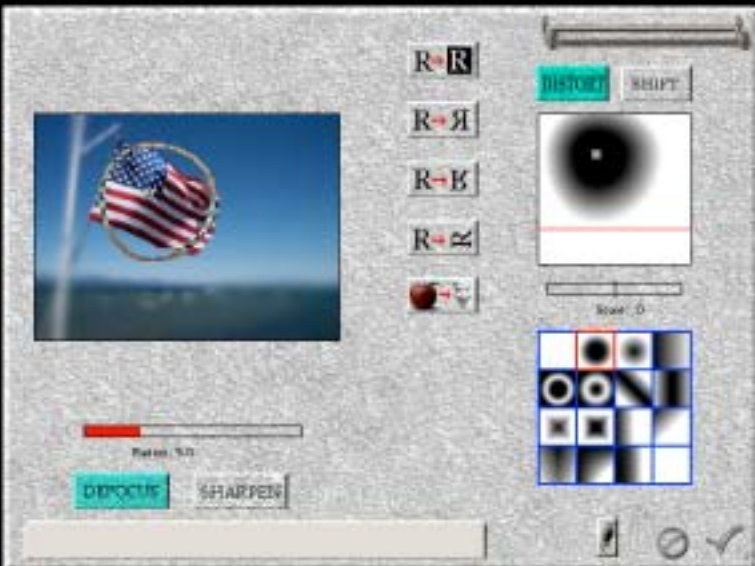
The photo at left is an example of one of the DreamOptics presets (dream-f056). Applied effects can be adjusted from course to fine; the glow amount, glow point and level of glow are adjustable. Separate sliders are available for setting overall equalization and brightness levels. You can fade the overall scatterlighting effect in and out, blending it with your original image for maximum flexibility. Save your customized settings for later use on your other images.



[www.plugsandpixels.com/scatterlight.html](http://www.plugsandpixels.com/scatterlight.html)



It used to be that photographers had to purchase special diffusion filters to create focus effects. As with duplicating other photographic effects, Andromeda has you covered with **VariFocus**. Using aperture masks, VariFocus enables you to specify exactly which parts of the image will be sharp, and which will vary in softness and depth-of-field. Masked areas can be flipped or rotated as desired.



You can use the included preset focus masks or create your own custom masks. Once selected, these masks can be distorted and shifted as needed for best results. Note that the VariFocus effect is not flat like a simple Gaussian Blur, but varies in depth.

Gain full control over depth of focus

[www.plugsandpixels.com/varifocus.html](http://www.plugsandpixels.com/varifocus.html)

# More plug-ins from Andromeda



**Perspective** turns your 2D image or text into a fully rotatable 3D-camera environment.



**Shadow** creates realistic perspective, multiple, soft edged, backlight, drop and cast shadows.



**RedEye** effectively zaps glowing red retinas with one simple click.

# Pixel Genius, LLC.

Deep Red Contrast



PhotoKit by Pixel Genius LLC

Please Select a Set and Effect

OK

PhotoKit Set: B&W Toning Set

Cancel

PhotoKit Effect:  Sepia Tone #1

Update

- Sepia Tone #1
- Sepia Tone #2
- Sepia Tone #3
- Cold Tone #1
- Cold Tone #2
- Cold Tone #3
- Selenium Tone
- Platinum Tone
- Brown Tone

Created by:  
Martin Evening  
Bruce Fraser

Seth Resnick  
Andrew Rodney  
Jeff Schewe

- 12 Image Enhancement effects
- 14 Color Balance Effects
- 14 Image Burn/14 Image Dodge effects
- 28 Tone Correction effects
- 12 Color-to-Black & White effects
- 9 Black & White Toning effects
- 26 Photographic Special effects



If you're serious about your images, it's time to move up to the next level of image enhancement software. Created by several of the top names in digital imaging for exclusive use with Photoshop, PhotoKit and Sharpener offer a large assortment of enhancement and adjustment options.

These effects are accessed via Photoshop's Automate menu (see left), and work their magic on separate layers for maximum editability.

## PHOTOKIT™ Analog Effects for Photoshop®



Diffusion #4

(Images enlarged to show effect)



Burn Top Corners;  
Soft Black Rule Fat

The examples at left show some of PhotoKit's toning capabilities. At the right is the same image treated with enhancement effects (Diffusion and Burn/Rule).



Original

PhotoKit Creative Sharpener by Pixel Genius LLC

Please Select a Sharpener Set and Effect

OK

Sharpener Set: Sharpening Effects

Cancel

Sharpener Effect:  Edge Sharpen 1

Update

- Edge Sharpen 1
- Edge Sharpen 2
- Edge Sharpen 3
- Luminance Sharpen 1
- Luminance Sharpen 2
- Luminance Sharpen 3
- Luminance Sharpen 4
- High Pass Sharpen 1
- High Pass Sharpen 2
- High Pass Sharpen 3
- Super Sharpener 1
- Super Sharpener 2
- Super Sharpener 3
- Super Sharpener 4
- Super Grain 100
- Super Grain 200
- Super Grain 400
- Super Grain 800
- Super Grain 1600

Sharpening options



Luminance  
Sharpen #4



Super  
Sharpener #4



Super  
Grain 1600

## PHOTOKIT™ SHARPENER



There's more than one way to sharpen an image! There's also more than one time to do it (three to be exact). PhotoKit Sharpener is aimed at those weaned from the Unsharp Mask approach for bringing out detail in an image via an advanced, professional sharpening workflow.

First, you begin the process by sharpening a freshly captured (RAW or scanned) image with Capture Sharpening options. Next, Creative Sharpener options are applied, as illustrated in the images of the filament above. Finally, the image is treated with Output Sharpening customized to the final output format and print size.

Each sharpening effect is applied on its own layer, so you can make additional adjustments to each one as needed.

Digital Element's Aurora is the closing thing to having a terrain-generating application right in Photoshop. Faster and more versatile than clip art and much faster and easier than Photoshop, Aurora specializes in water, sky, and lighting for outdoor scenes that stand on their own or become an addition to existing photos.

While not a traditional 3D application, Aurora provides full control over camera placement and can use Layers to simulate distance and depth among objects and elements in the image.

Version 2 adds Sun spikes, a moon feature with moon phases, Nimbus clouds that can be shaped, underwater scenes, zoom and more.

[www.plugsandpixels.com/aurora.html](http://www.plugsandpixels.com/aurora.html)

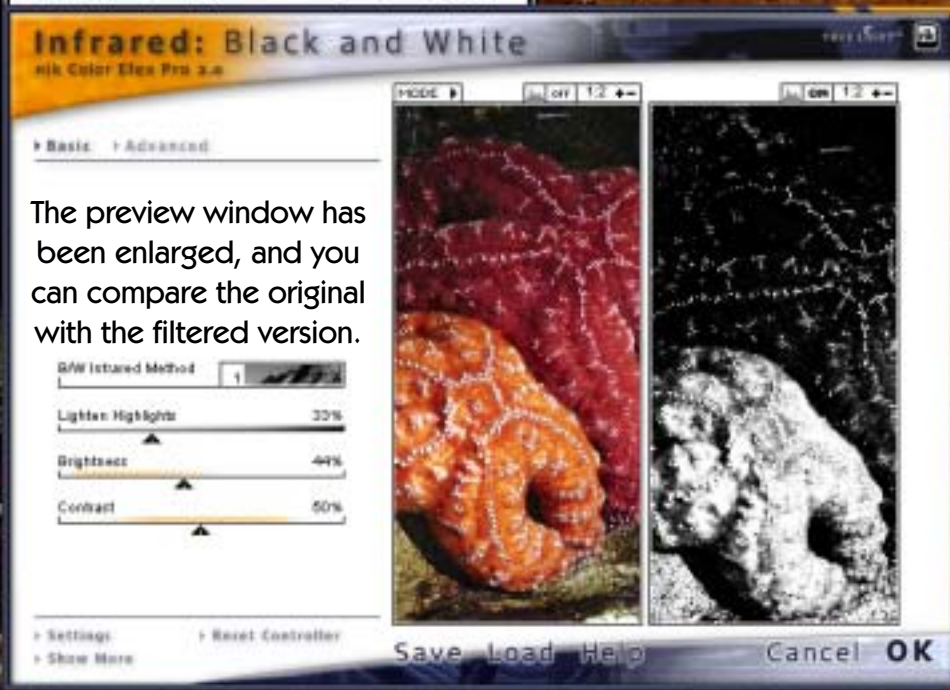
# Aurora 2.0





When you watch TV you use a remote control to change channels and adjust the picture, so why not take the same approach with your digital photo effects as well? nik Color Efex Pro 2 offers a new Selective palette (shown at left) to quickly choose and apply the 75 digital photographic-style filters in this

True Light color processing provides a unique system of controlling the light and color of your image



The preview window has been enlarged, and you can compare the original with the filtered version.



**nik Color Efex Pro 2.0**

the next generation of photographic digital filters

[www.plugsandpixels.com/colorefexpro.html](http://www.plugsandpixels.com/colorefexpro.html)



Texture Anarchy is out of control! In a wild boundless visual spirit reminiscent of Kai Krause, this plug-in set from Digital Anarchy offers unique moving 3D interfaces as it helps you create beautiful seamless procedural textures using three separate operations: **Texture Anarchy Explorer** uses complex mathematical algorithms (as opposed to imported graphics) to create unique textures. Use its Mutator to generate random textures, its Layer Edition Room to edit textures and its Deep Noise Room for more detailed texture manipulation.

**Tiler Texture Anarchy** adds proportional constraint to the texture, allowing it to be tiled and used for backgrounds and 3D texture mapping. Finally, **Edge Anarchy** uses the materials created in the other two Digital Anarchy plug-ins and applies them as textured, distressed or ornamental borders around images or text.

[www.plugsandpixels.com/textureanarchy.html](http://www.plugsandpixels.com/textureanarchy.html)

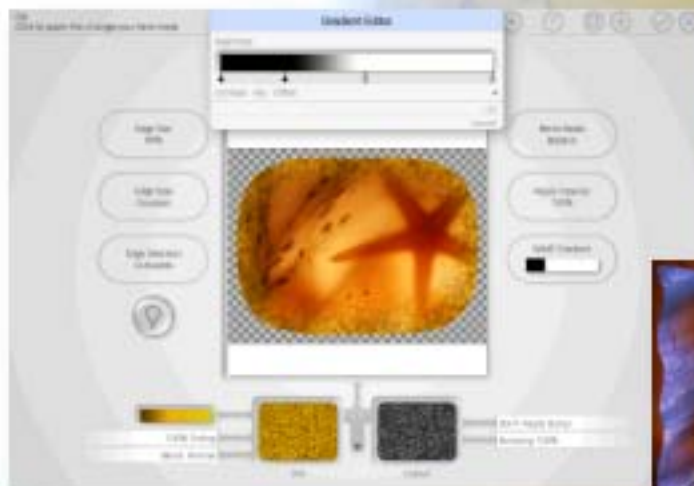
## { Texture Anarchy }



**Texture Anarchy Explorer**  
Create random textures



**Tiler Texture Anarchy**  
Generate seamless tiled textures



**Edge Anarchy**  
Apply textures to image & text edges

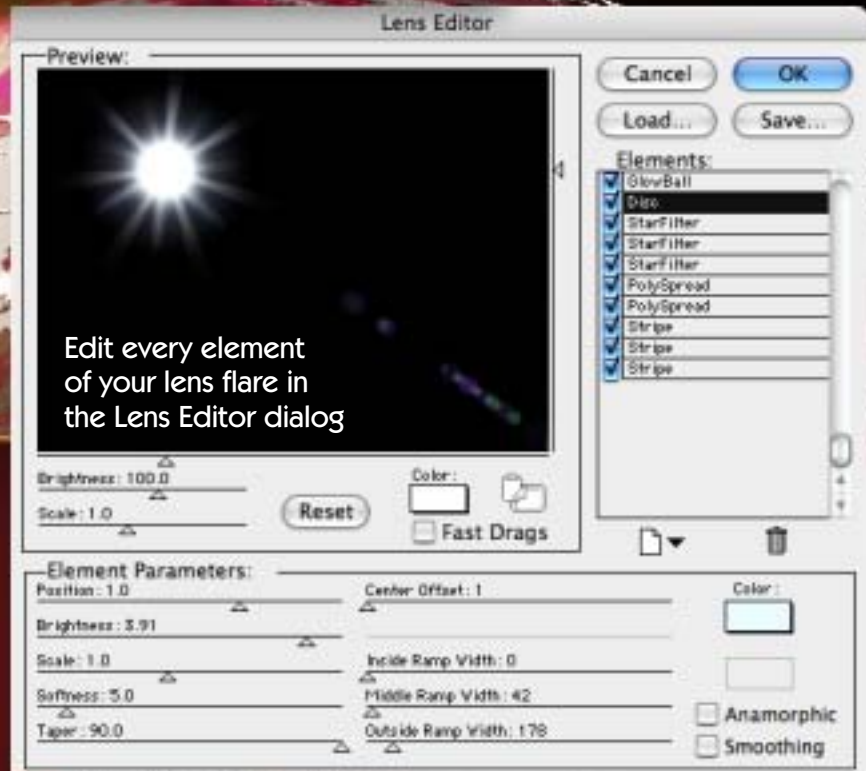




- 35mm.lfp
- 85mm.lfp
- Arc welder.lfp
- basic lens.lfp
- basic spotlight.lfp
- Blimp flare.lfp
- bright bluelight.lfp
- chroma lens 2 .lfp
- chroma lens.lfp
- cool lens.lfp
- Desert sun.lfp
- diffraction.lfp
- diffraction2.lfp
- diffraction3.lfp
- distant quantum.lfp
- drydock spikeball.lfp
- generic panavision.lfp
- green refls.lfp
- maple tree.lfp
- new blue lens.lfp
- nifty pink lens.lfp
- orangespike.lfp
- pv1.lfp
- quantum5.lfp
- Quicktake 200.lfp
- Red laser.lfp



If you watch television or go to the movies, chances are very good that you've seen Knoll Light Factory in action. You'll remember developer John Knoll as one of the original authors of Photoshop. He's now with Industrial Light & Magic. Now you can use his advanced lens flare effects in your own projects via the **Knoll Light Factory 2** plug-in.



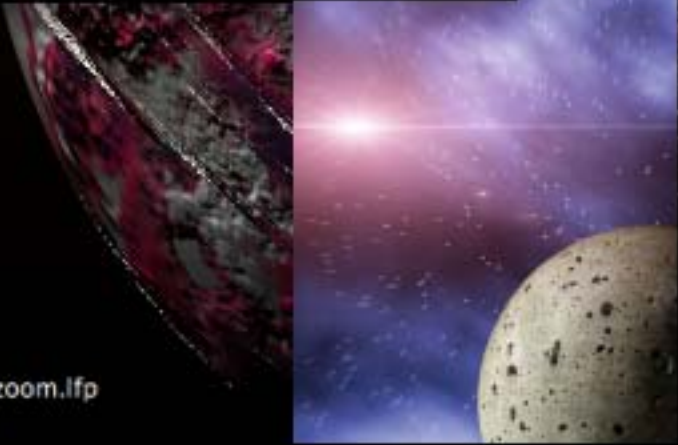
Edit every element of your lens flare in the Lens Editor dialog

# LIGHT FACTORY 2

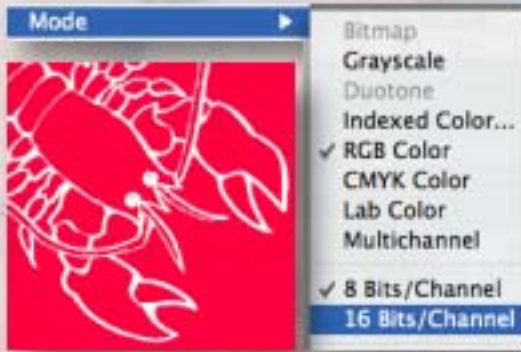
**KNOLL**

[www.plugsandpixels.com/knolllightfactory.html](http://www.plugsandpixels.com/knolllightfactory.html)

- rock concert.lfp
- rock concert2.lfp
- scratch1.lfp
- six point star 2.lfp
- six point star 3.lfp
- six point star.lfp
- spikey glow.lfp
- spikey glow2.lfp
- sunset.lfp
- the old 50-300mm zoom.lfp
- the old 105mm.lfp
- vortex bright.lfp
- warm sunflare.lfp



Knoll Light Factory gives you access to 25 lens filters that range from basic flares to glows to photon torpedoes. Choose a flare style from the main window (see style list at left) and tweak the element parameters from the Lens Editor Window until you achieve exactly the effect you need. The result is a very realistic lens flare effect that is indistinguishable from a real photographic one. Try animating the effect, as well as using light effects between a background scene and separate foreground elements (such as trees) for very believable composites.



Some people consider lobster a delicacy. You'll soon learn to consider it a unique imaging philosophy-- Divide and Conquer.



Lobster is a Photoshop droplet from Down Under that operates via a floating window, onto which you drag your spotted and flattened images (up to 48 bits, depending on Photoshop version). The image is then duplicated and split into layers such as you've never seen before: The original layer, a Luminosity layer and a Chromaticity set (the layers are shown at left)!

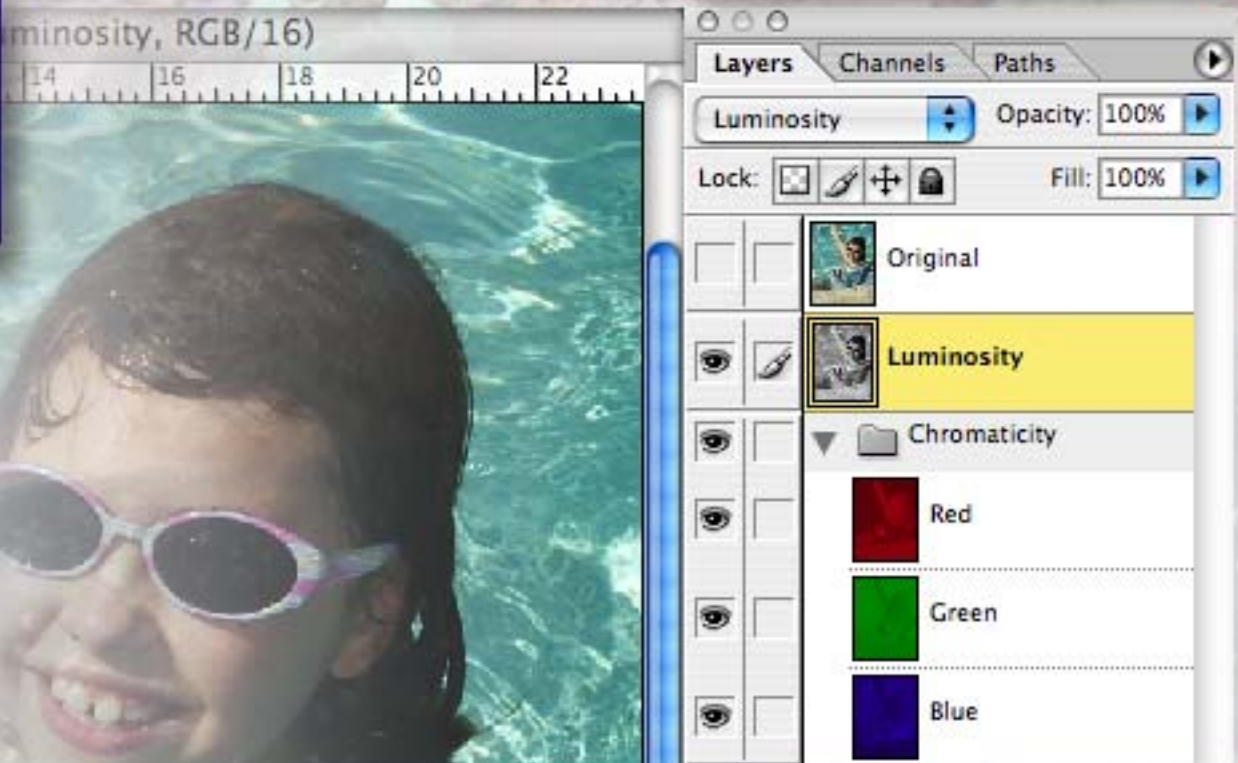
Before you begin, the folks at Freegamma highly recommend you adjust your RGB working space to "Ekta Space PS 5, J. Holmes" (instructions are provided) for best results, and to properly prep your New Channel setup. As Lobster does its work, it is not doing a simple Grayscale or LAB Channel conversion of your file, but rather providing separate Luminosity and Chromaticity layers within which you can do specific and appropriate corrective operations. This is important because in a normal RGB workflow, adjusting tonality usually adversely affects color balance. No longer. The Luminosity layer is also where you want to do any sharpening.

The Chromaticity layer sets represents the hue and saturation of the image separated into red, green and blue layers. Here you can make your hue and saturation changes (using Adjustment layers if desired) without affecting luminosity. For serious image retouchers, it's an image enhancement dream come true.



Feed your images to the Lobster one at a time

[www.plugsandpixels.com/lobster.html](http://www.plugsandpixels.com/lobster.html)



# SKIN TUNE



Skin color is one of the first things you notice is wrong in an image: It's usually too red, too pink or too green. The new Skin Tune plug-in from PhotoTune not only addresses this problem with technical agility and cultural sensitivity, it earns an advanced technical degree in the process! An incredible amount of research went into making Skin Tune the ultimate plug-in tool for flesh color correction.

Start by clicking  
on a skintone



After opening your dynamic range and brightness-adjusted portrait, you are instructed to click on a mid-range skin tone sample that avoids bright highlights and dark shadows.



From the contextual menu, select the general ethnicity of the person in the portrait.



Skin Tune will present you with a flesh color palette based on your selection (within which you can adjust the skin color as necessary by choosing an alternate sample). The preview image changes based on your selection.



# closing artwork

Created with:

LucisArt

Photo/artwork by: Mike Bedford



Sculpture (L) and Klimpt (R)

LUCIS  
ART



Original